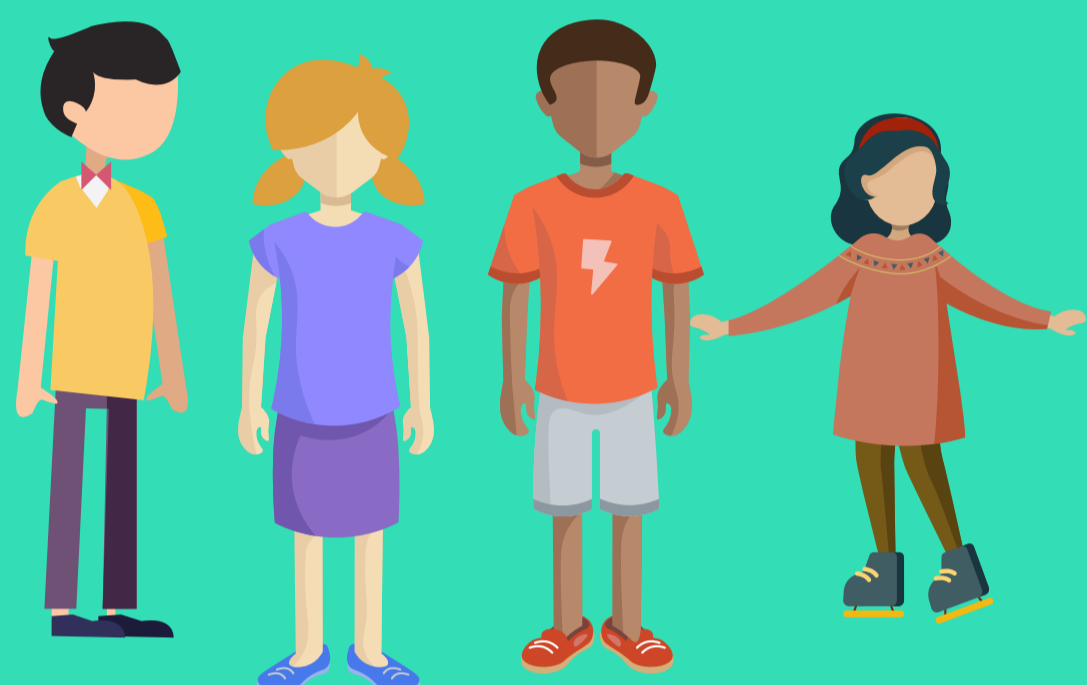


HELP US UNDERSTAND

THE EFFECTS OF **ALCOHOL**

**ON THE BRAIN**

**PARTICIPATE IN THIS CUTTING-EDGE RESEARCH**



**WHO?**

CHILDREN & YOUTH **AGED 7-18** WHO WERE EXPOSED TO ALCOHOL DURING PREGNANCY

**WHAT DOES IT ENTAIL?**

COGNITIVE & BEHAVIOURAL ASSESSMENT, MAGNETIC RESONANCE IMAGING (MRI) SCAN



**WHEN?**

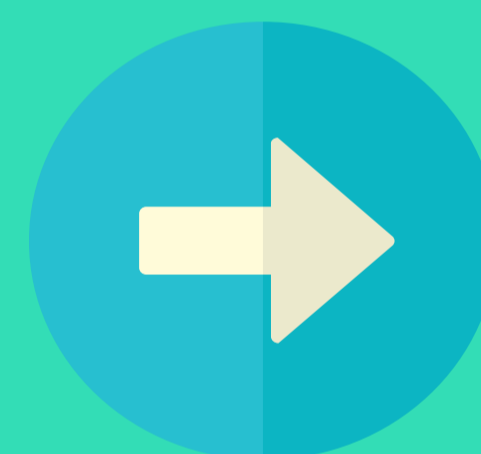
**TIME 1:  
now**

~6-9 hr.  
assessment  
+ MRI scan



**TIME 2:  
1 year later**

online  
questionnaires



**TIME 3:  
2 years later**

~6-9 hr.  
assessment  
+ MRI scan

**WHERE?**

ALBERTA CHILDREN'S HOSPITAL, **CALGARY**  
OR UNIVERSITY OF ALBERTA, **EDMONTON**



**BENEFITS!**

SUMMARY OF YOUR CHILD'S COGNITIVE FUNCTION & BEHAVIOUR, AS WELL AS COMPENSATION FOR TIME:

**Time 1: \$150, Time 2: \$50, Time 3: \$250**



For more information about participating, please scan the QR code to the left or contact **Mercedes Bagshawe** at [brainmri@ucalgary.ca](mailto:brainmri@ucalgary.ca) or by calling **1-403-955-5548**. Thank you for your interest in this project!



UNIVERSITY OF  
**CALGARY**



UNIVERSITY OF  
**ALBERTA**

<http://www.developmentalneuroimaginglab.ca>